



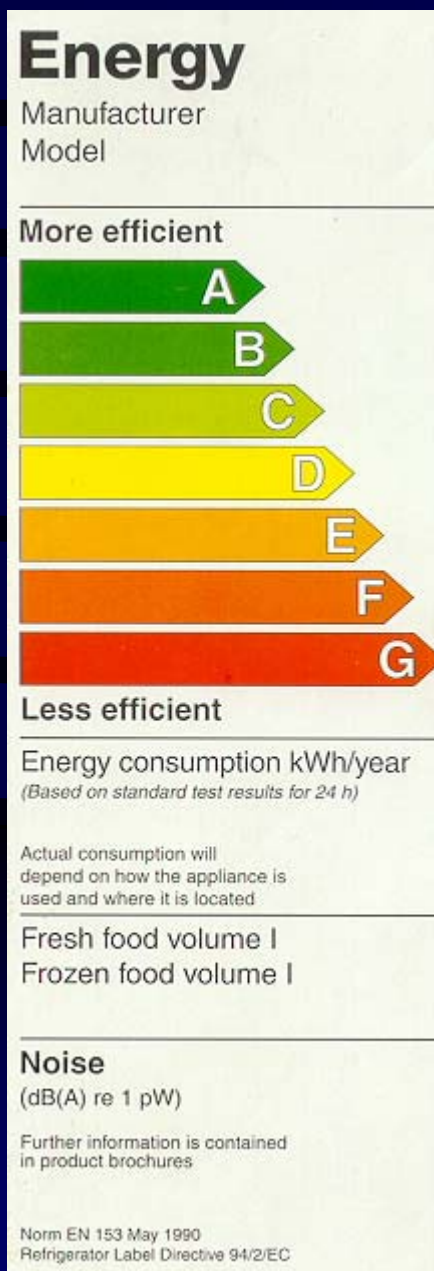
# CEECAP

**Energy Labels – how and why to  
support energy efficient appliances  
- *for state officials***

SEVEn, o.p.s.

[www.ceecap.org](http://www.ceecap.org)

# CEECAAP – Content:

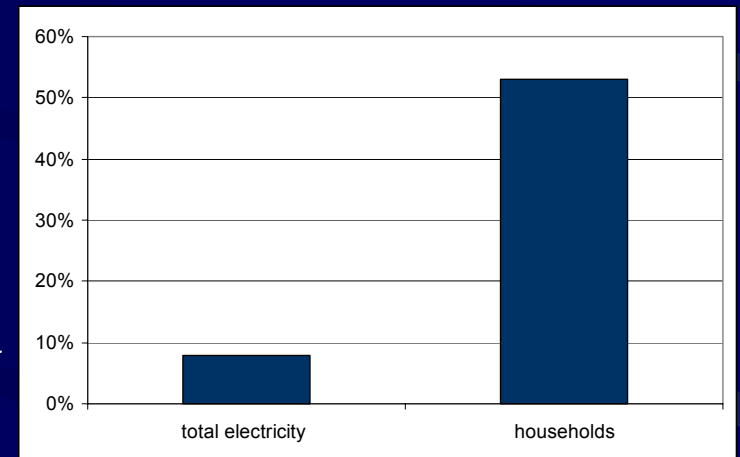


- 1) Importance of appliances in energy consumption
- 2) Energy and labelling legislation
- 3) Information on energy labels
- 4) Role of state institutions
- 5) Discussion on main problems
- 6) Reasons to cooperate and how

# Importance of appliances in energy consumption

*Example of Czech Republic:*

Between 1989 and 2005 total electricity consumption increased by 8%, but in households by 53% !



# Impact of energy labelling on energy consumption

*The impact of the EU labelling scheme on the sales- weighted average energy efficiency of refrigeration appliances, which improved by 26% between 1992 and late 1999. Over one third of this change is attributable to labelling.*

JRC/EC

# Energy labels are considered to be:

- Able to produce very large energy savings;
- Very cost effective and limiting energy growth without limiting economic growth;
- They treat all manufacturers, distributors and retailers equally;
- The resulting energy savings are generally assured, comparatively simple to quantify, and readily verified.
- They require information supplied from a manageable number of manufacturers rather than asking the entire consuming public to seek for it.

# European energy priorities:

- **Increasing competitiveness**
- **Developing environmental protection and reaching Kyoto commitments**
- **Improving security of supply**

# European labeling legislation:

- **Directive 92/75/EEC – Energy Labelling for Domestic Appliances –**
  - *To enable harmonization of national measures on the publication and product information on energy and another consumption of certain types of appliances.*

# European labeling legislation:

**Directive 92/75/EEC – Energy Labelling for Domestic Appliances covers:**

- Refrigerators, freezers and combinations,
- Washing machines, driers and combinations,
- Dishwashers,
- Ovens,
- Water heaters and hot water storage appliances,
- Lighting sources, air-conditioning appliances

# **European new appliance legislation:**

## **Directive 2005/32/EC -**

- To focus on all life-cycle energy costs and environmental impacts of (all and selected) energy using products**

# European Green Paper on energy efficiency

*Published in 2005, supports e.g.:*

- **Annual Energy Efficiency Action plans,**
- **Better targeted publicity campaigns and improved product labeling**
- **Using public procurement, ...**

# **Czech Labelling Legislation**

**Govt. Notice n. 442/2004 Sb.,  
covering all EU labeled  
appliances**

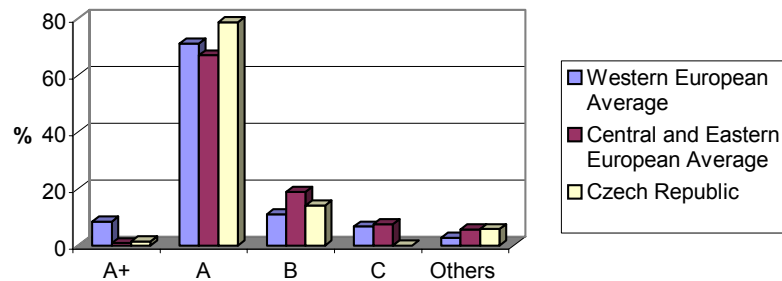
# Information from energy label

| <b>Energy</b>  |  | Dishwasher |
|--|--|------------|
| Manufacturer   |  | LOGO       |
| Model  |  | ABC<br>123 |
| <b>More efficient</b><br><br><b>Less efficient</b>   |  | <b>A</b>   |
| <b>Energy Consumption kWh/cycle</b><br><small>(based on the test result for manufacturer's standard cycle using cold H<sub>2</sub>O)</small>   |  | X.YZ       |
| <small>Actual consumption will depend on how the appliance is used</small><br><b>Cleaning Performance</b><br><small>A: higher G: lower</small> |  | ABCDEFG    |
| <b>Drying Performance</b><br><small>A: higher G: lower</small>   |  | ABCDEFG    |
| <b>Standard Place Settings</b>   |  | YZ         |
| <b>Water Consumption</b> l/cycle   |  | YX         |
| <b>Noise</b><br>(dB(A) re 1 pW)  |  | XY         |
| <small>Further information is contained in product brochure</small>  |  |            |
| <small>Norm EN 50242<br/>Dishwasher label Directive 97/17/CE</small>   |  |            |

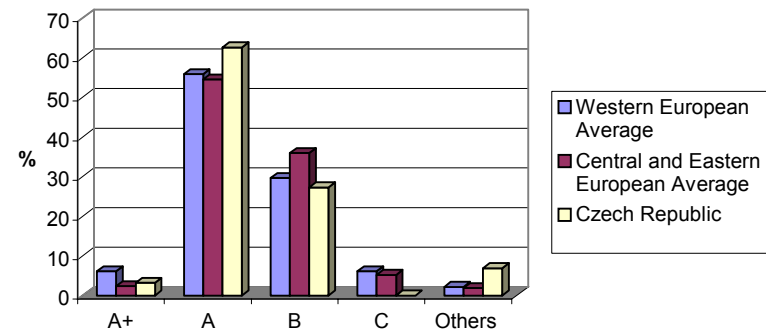
- Energy class distribution (cooling range: C worst, A++ best)
- Annual or cycle kWh consumption (for costs)
- Water consumption, noise
- Other classes (washing, cleaning, drying...)

# (Sales weighted) Share of appliances by energy classes

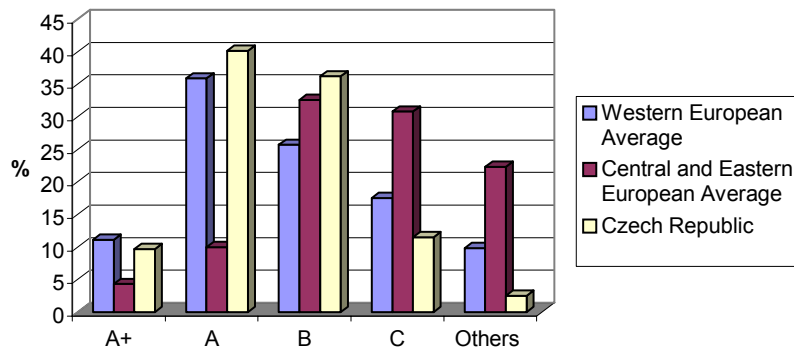
Sale of washing machines by energy class in 2004



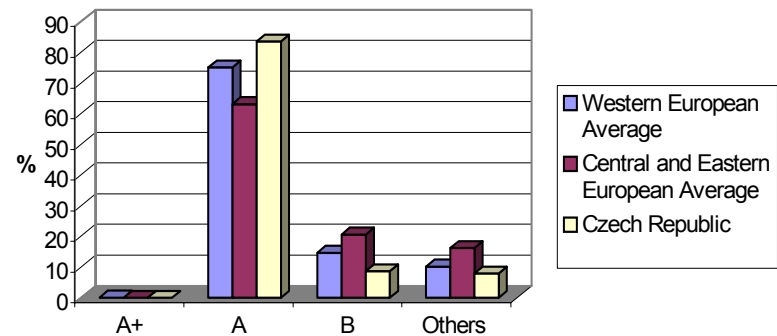
Sale of refrigerators by energy class in 2004



Sale of freezers by energy class in 2004



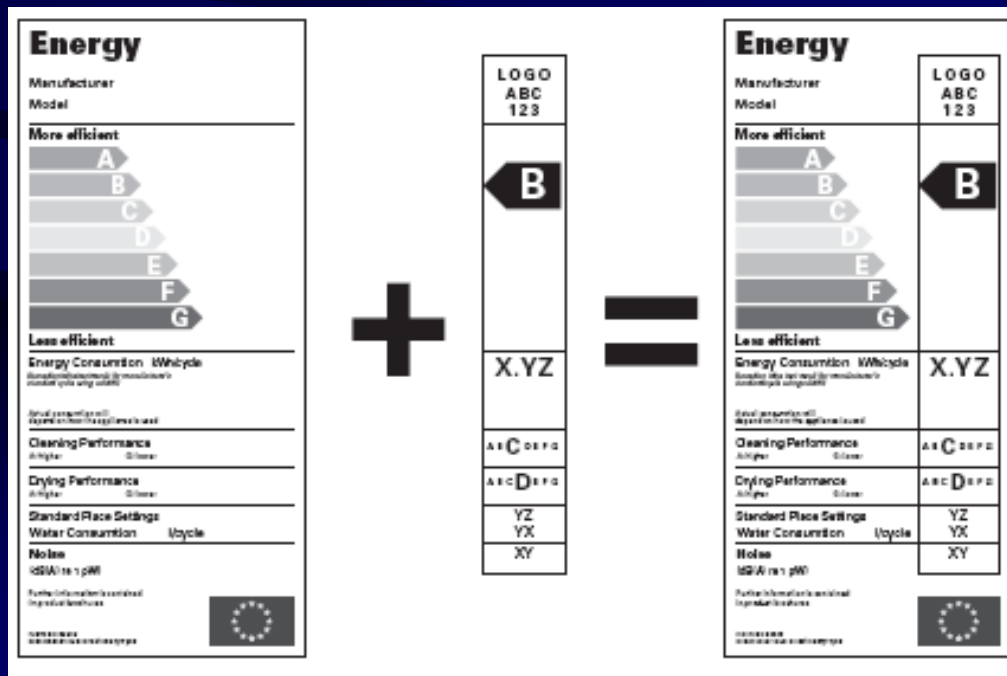
Sale of dishwashers by energy class in 2004



Source: GfK, 2005

# Distribution of labels to shops

- Delivered by manufacturers and displayed by retailers
- Retailer is responsible for fulfilling legal obligation
- Manufacturers or shop chains often supply general „empty“ label for certain appliance type to which the strip is stucked



# Main duties of state institutions

- 1) Legislation adoption
- 2) effective distribution of responsibilities
- 3) organisation of shop inspections
- 4) verification tests of appliances
- 5) EU and international exchange of experiences
- 6) national promotion efforts

# Main duties – shop visits:

Some hints:

1. Send letters that checks will take place (with no date and place indication)
2. Know exactly what appliances (eg. no microwave ovens) and where (no second hand, or stored) have to be labelled
3. Full label version - colour, correct appliance version, only data strip, placement position, other misleading info

# Main duties – shop visits:

## NO excuses for explanations such as:

1. the dealer did not receive the labels (data strips) from the supplier
2. the dealer did not receive the background sticker from the supplier, so only the data strip is displayed
3. the dealer put the label on the side or inside the appliance because otherwise it would disturb the design of the appliance.

# *Appliance TESTS*

|                        |  |
|------------------------|--|
| Preparations           | <ul style="list-style-type: none"><li>• laboratory selection</li><li>• appliance selection</li><li>• product selection</li></ul>   |
| Carrying out the tests | <ul style="list-style-type: none"><li>• buy products</li><li>• prepare test (e.g. loading plan)</li><li>• carry out tests, including feedback to the suppliers</li></ul>   |
| Follow-up              | <ul style="list-style-type: none"><li>• assess the results and process them (in case of legal procedure)</li><li>• store the results for the next product selection</li><li>• report the results in an (anonymous) way</li></ul> |

# Why to take the extra effort?

**Energy labels are proven and effective Energy Efficiency Policy with an effect on:**

- Reducing capital investment in energy supply infrastructure
- Enhancing national economic efficiency by reducing the energy bills
- Enhancing consumer welfare
- Strengthening competitive markets
- Meeting climate change goals
- Averting urban/regional pollution


# Not only passive adoption but also active influence

New member states, as full EU members, can take active role in the process of appliance legislation adoption –

- to update energy classes calculation, inclusion of new appliances, promotional activities etc.

# CEECAP project

- European EIE project 2006 – 2008

Intelligent Energy  Europe

- Goal: To motivate the government officials, appliance producers and distributors, as well as the general public, to use energy labels as a reliable system for purchasing energy efficient appliances.

# CEECAP project - main problems are covered

1. *Passive transformation of legislation without real motivation*
2. *Long time needed for adoption of new labels*
3. *Control institutions underfinanced or have other priorities*
4. *No control between the competitors*
5. *Presence of labels in shops varies considerably*
6. *Low state support to this type of promotion*

# CEECAP project - main problems

*Discussion* :

*Main problems in your view?!*

*How we could help you with them?*

# CEECAP – potential cooperation

## **Proposed areas of possible cooperation:**

- Policy documents preparation and promotion
- Training program to inspectors
- Active promotion to retailers and manufacturers
- Promotion activities to the final customers
- International exchange of information, eg. on activities undertaken elsewhere
- ...etc., depending on your needs

# CEECAP

Thank you for  
your attention!

SEVEn, o.p.s.

Info: [www.ceecap.org](http://www.ceecap.org)

Juraj Krivošík – [juraj.krivosik@svn.cz](mailto:juraj.krivosik@svn.cz)

